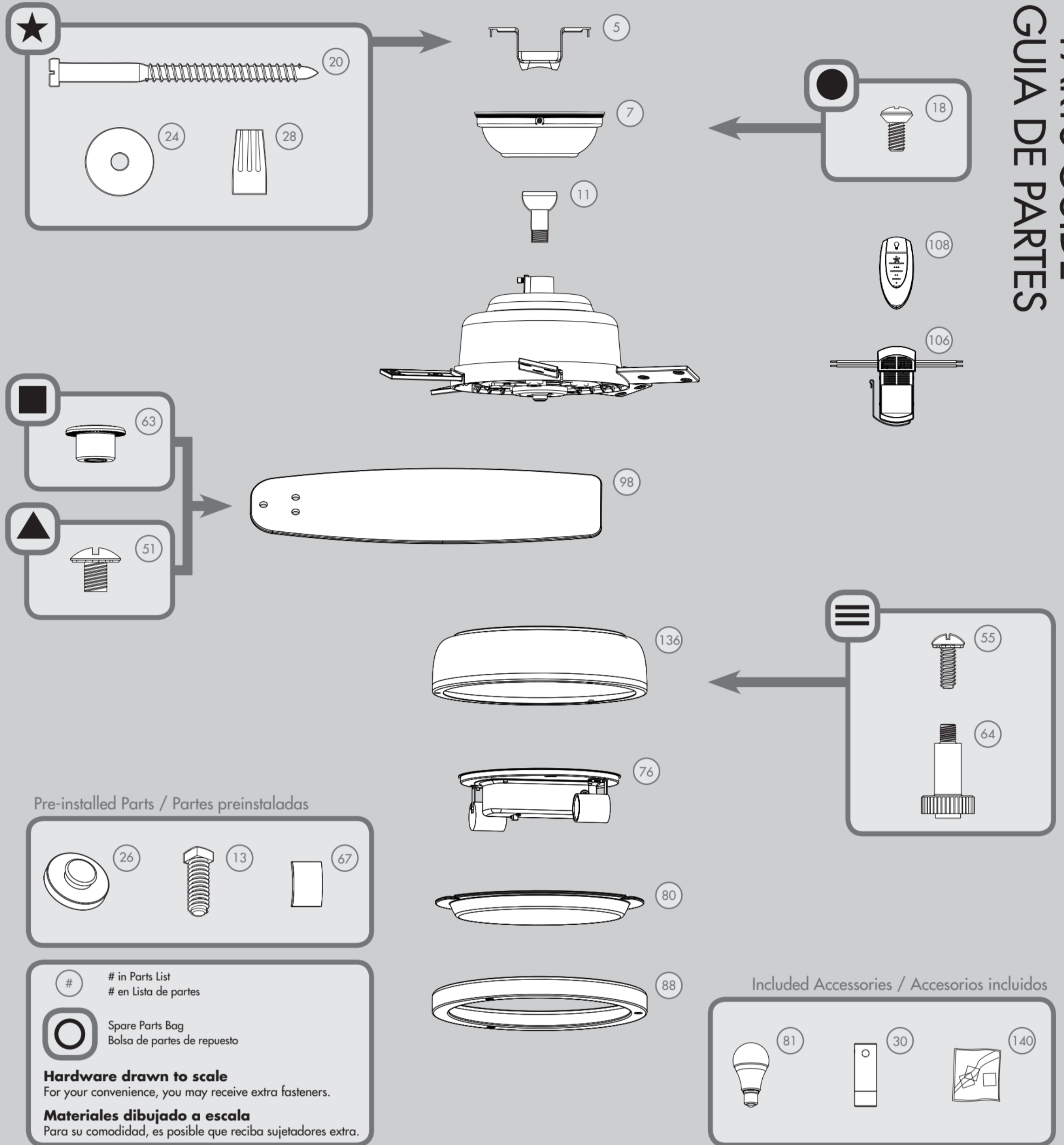





# PARTS GUIDE GUIA DE PARTES



Pre-installed Parts / Partes preinstaladas



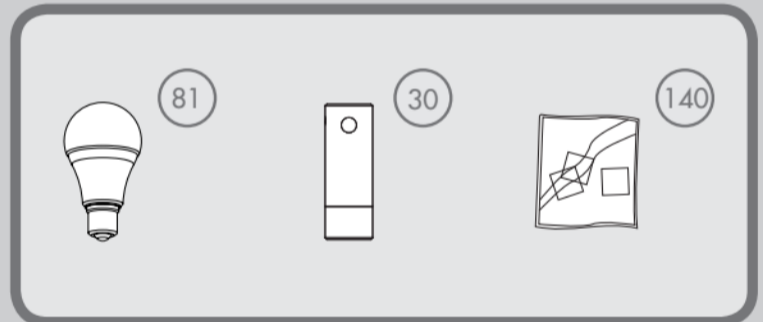
# # in Parts List  
# en Lista de partes

 Spare Parts Bag  
Bolsa de partes de repuesto

**Hardware drawn to scale**  
For your convenience, you may receive extra fasteners.

**Materiales dibujado a escala**  
Para su comodidad, es posible que reciba sujetadores extra.

Included Accessories / Accesorios incluidos



| Parts List |                               | MODEL #       | 59040                   | 59440                   | Lista de piezas                                |
|------------|-------------------------------|---------------|-------------------------|-------------------------|--|
|            |                               | MODELO #      |                         |                         |  |
|            |                               | DRAWING #     | K3449-01                | K3449-02                |  |
|            |                               | ESQUEMA #     |                         |                         |  |
|            |                               | Weight ±2 lbs | 20.2 lbs (9.2 kg)       | 20.2 lbs (9.2 kg)       |  |
|            |                               | Peso ±2 lb    |                         |                         |  |
|            |                               | FINISH        | Noble Bronze            | Matte Nickel            |  |
|            |                               | FINISH        | Bronce noble            | Níquel mate             |  |
| #          | Item Name                     | Qty. / Cant.  | Part# / No. de la pieza | Part# / No. de la pieza | Nombre del Item                                |
| 1          | Hangin System Kit             | 1             | K0065-02                | K0065-02                | Kit del sistema de suspensión                  |
| 5          | Ceiling Bracket               | 1             |                         |                         | Soporte de techo                               |
| 7          | Canopy                        | 1             |                         |                         | Campana  |
| 11         | Downrod Assembly              | 1             |                         |                         | Conjunto de varilla                            |
| 13         | Setscrew                      | 1             |                         |                         | Tornillo de fijación                           |
| 18         | Canopy Screw                  | 3             |                         |                         | Tornillo de la campana                         |
| 20         | Wood Screw 3"                 | 2             |                         |                         | Tornillo para madera de 3"                     |
| 24         | Flat Washer                   | 2             |                         |                         | Arandela plana                                 |
| 26         | Mounting Isolator             | 4             |                         |                         | Aislador de montaje                            |
| 28         | Wire Connector                | 4             |                         |                         | Conector de cable                              |
| 30         | Hanger Pipe                   | 1             |                         |                         | Tubo de suspensión                             |
| 50         | Hardware Kit                  | 1             | K3449-00-860            | K3449-00-860            | Kit de materiales                              |
| 51         | Blade Assembly Screw          | 16            |                         |                         | Tornillo de montaje de paleta                  |
| 55         | Switch Housing Assembly Screw | 6             |                         |                         | Tornillo de montaje de la caja del interruptor |
| 63         | Blade Nut                     | 16            |                         |                         | Tuerca de paleta                               |
| 64         | Thumbscrew                    | 3             |                         |                         | Tornillo de mano                               |
| 67         | Globe Gasket                  | 3             | K3079-01                | K3079-01                | Empaquetadura de la pantalla                   |
| 76         | Light Kit Assembly            | 1             | K3455-01                | K3455-01                | Conjunto del kit de luz                        |
| 80         | Globe                         | 1             | K4052-01-045            | K4052-01-045            | Pantalla                                       |
| 81         | LED Bulb                      | 2             | K4870-03                | K4870-03                | Bombilla LED                                   |
| 88         | Globe Retainer                | 1             | K3450-01                | K3450-01                | Dispositivo de retención tipo pantalla         |
| 98         | Blade Set                     | 1             | K0655-25-333            | K0655-25-482            | Juego de paletas                               |
| 106        | Remote Control Receiver       | 1             | K2431-11                | K2431-11                | Receptor de control remoto                     |
| 108        | Remote Control Transmitter    | 1             | K1131-02                | K1131-02                | Transmisor del control remoto                  |
| 136        | Upper Switch Housing          | 1             | K3443-02                | K3443-02                | Caja superior del interruptor                  |
| 140        | Balancing Kit                 | 1             | K0118-01                | K0118-01                | Kit de equilibrado                             |